

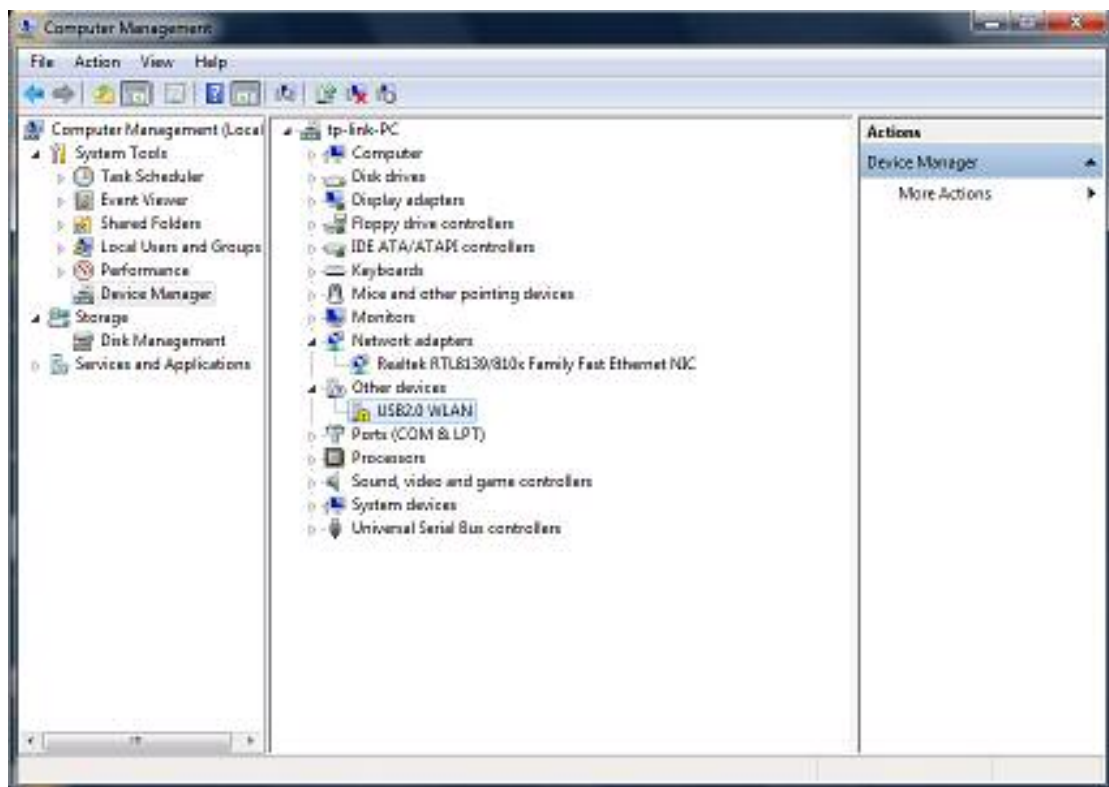
## How to Install TP-LINK Adapters on Windows 7

Since Windows 7 has been integrated with drivers for most chipsets, in general cases, TP-LINK adapters could be automatically installed on Windows 7. However, in some cases, the adapter could not be successfully installed, after plugging to the computer USB or PCI port, and hence we need to install it by manually load the driver files.

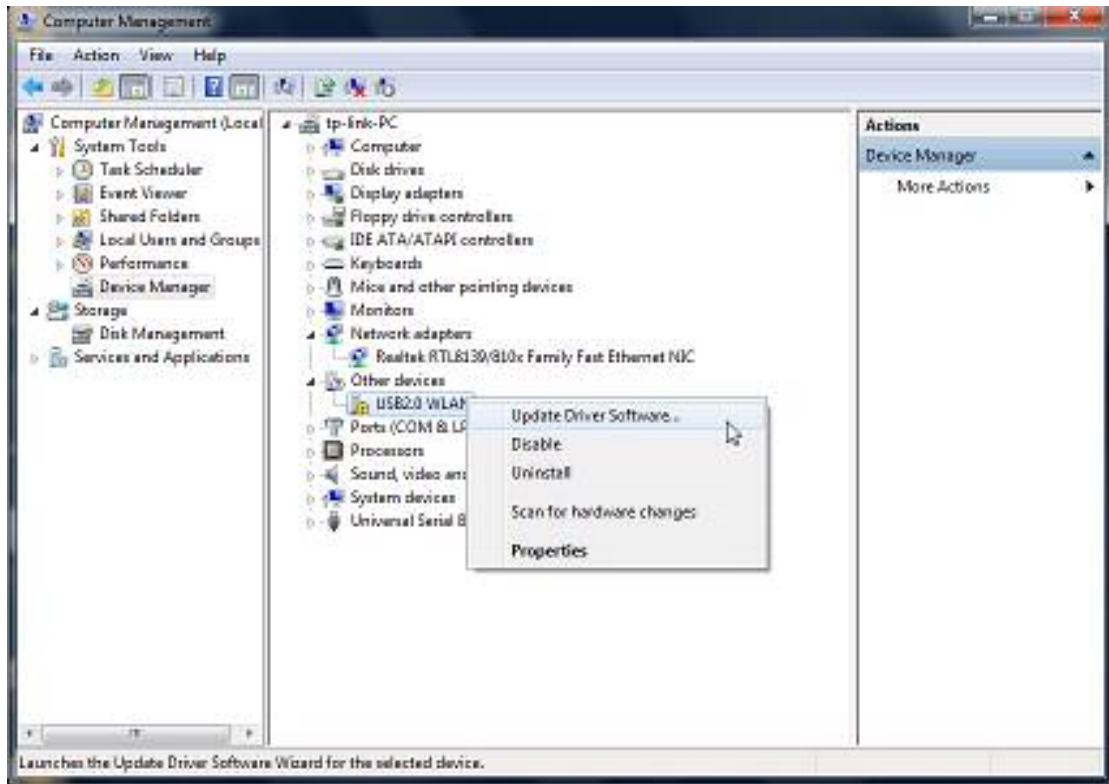
NOTE: This method shown below is not the same as running the “**setup.exe**” file on the CDROM. Running the “**setup.exe**” inside Windows7 will not install the driver to the computer.

Before you start, please place the TP-Link disc in the CDROM drive. If you do not have the CDROM, you can also download the driver from [www.tp-link.com](http://www.tp-link.com) website (under the “**Support -> Download**” tag). Please check your adapter hardware version (either V1 or V2) in order to download the correct version to match your adapter hardware. If the label has not mention either V1 or V2, then this version of the hardware of your adapter is V1.

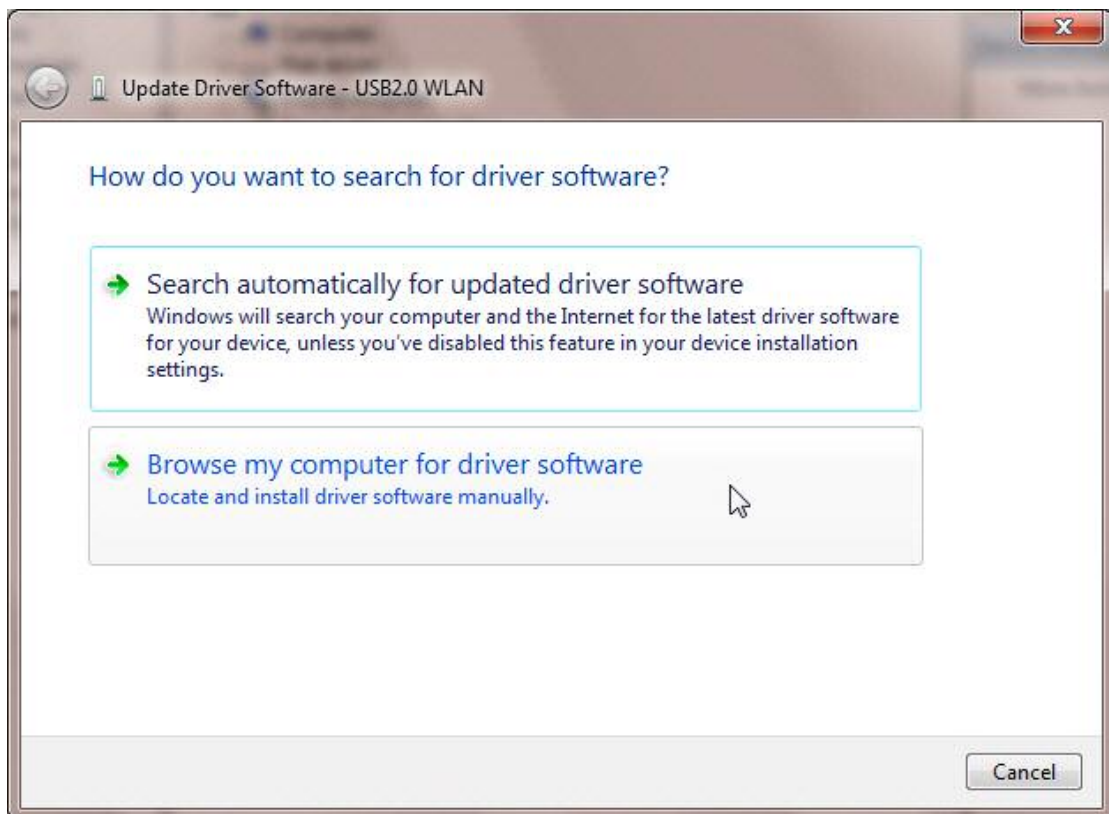
1. Right click **Computer**, and click **Manage** on the menu.
2. Go to Device Manager. Then in the middle column, please expand **Other devices** or **Network adapters**. You could see an unrecognized device with a yellow exclamation mark on it.



3. Right click on that unrecognized device, and go to **Update Driver Software....**

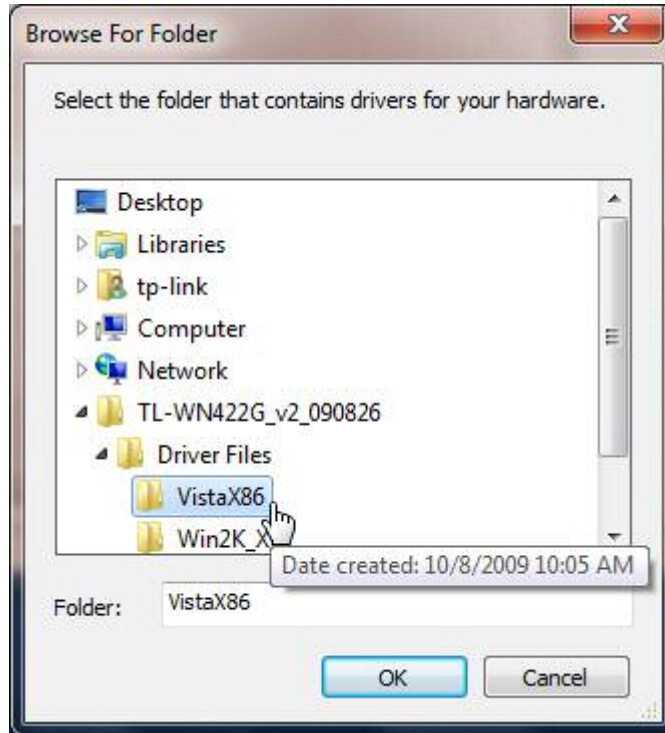


4. Click on **Browser my computer for driver software**. In this case, you need to select the path where your driver is store. For CDROM, the path will be your CDROM driver letter. If you have downloaded the driver, then the path will be the folder path in your computer hard disk.

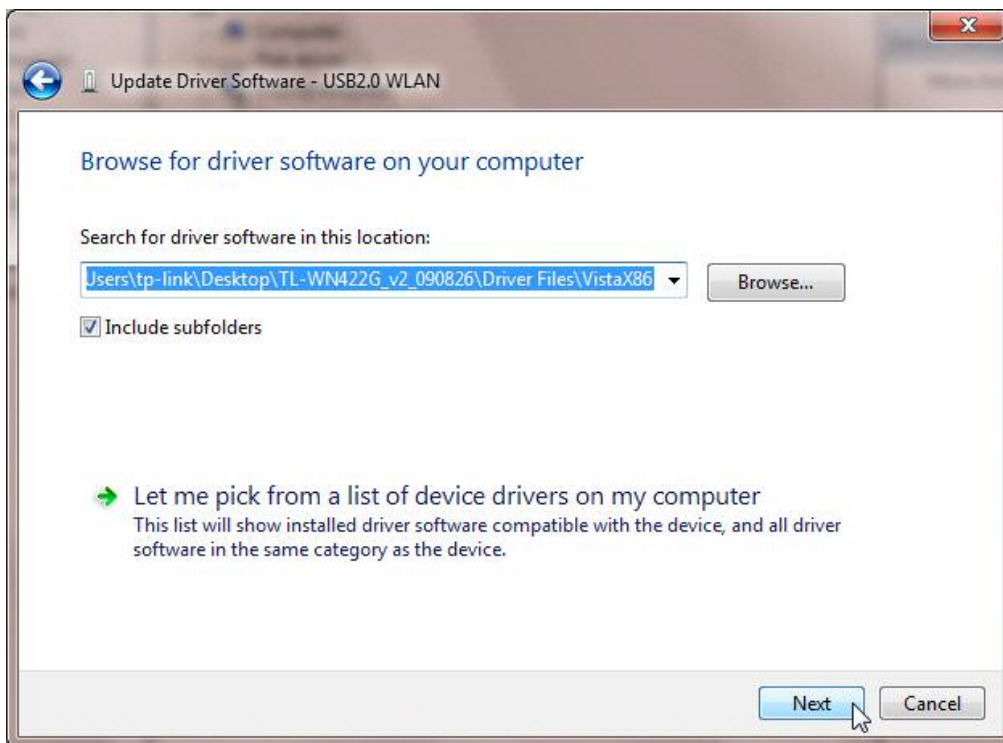


5. Click **Browser...**, and locate to the folder which contains the corresponding Vista driver. Then hit **OK**. Please note: **VistaX86** actually refers to your computer that is using the **32bit version of the Windows 7**.

If you are using the **64bit Windows 7**, you need to choose **VistaX64**.



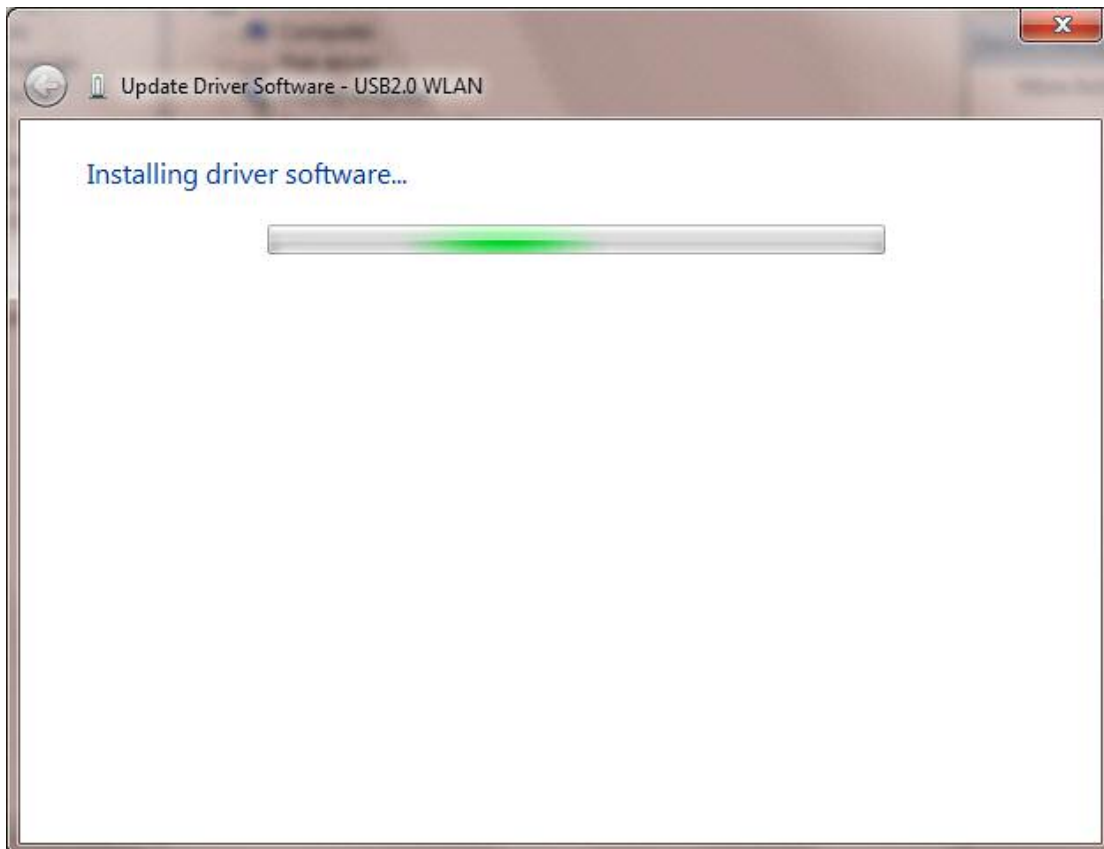
6. Click **Next**.



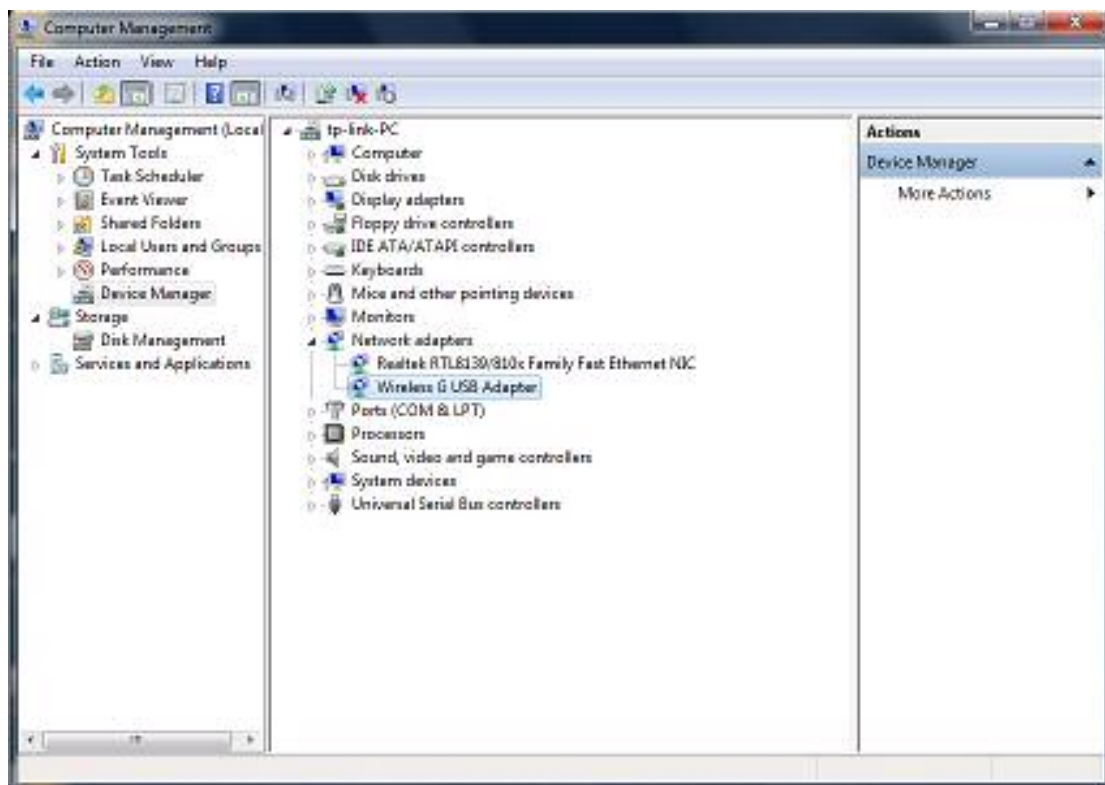
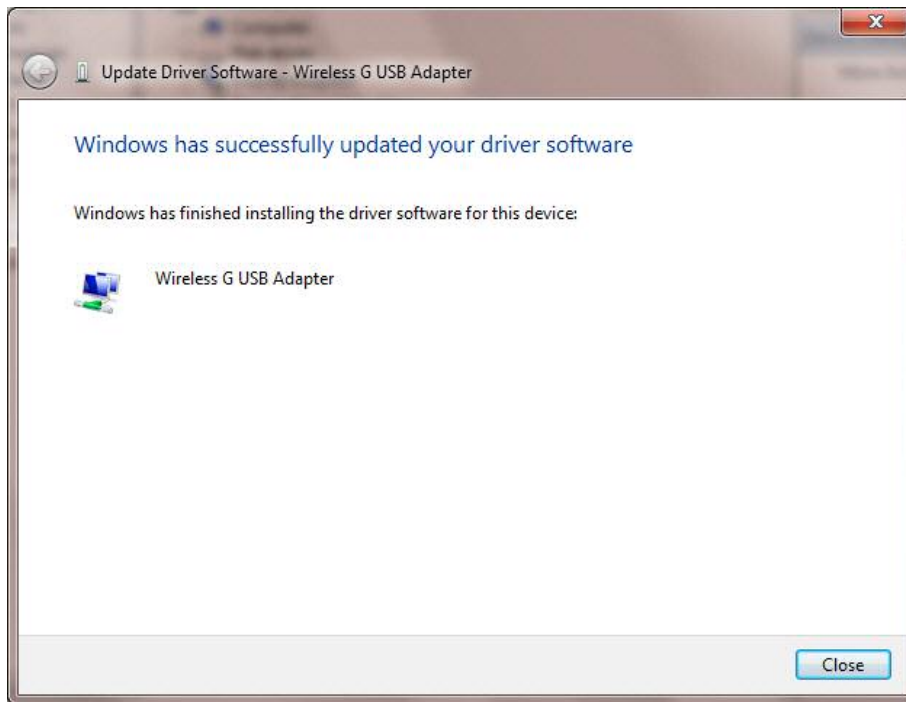
7. When the **Windows Security** alarm pops out, please select **Install this driver software anyway**.



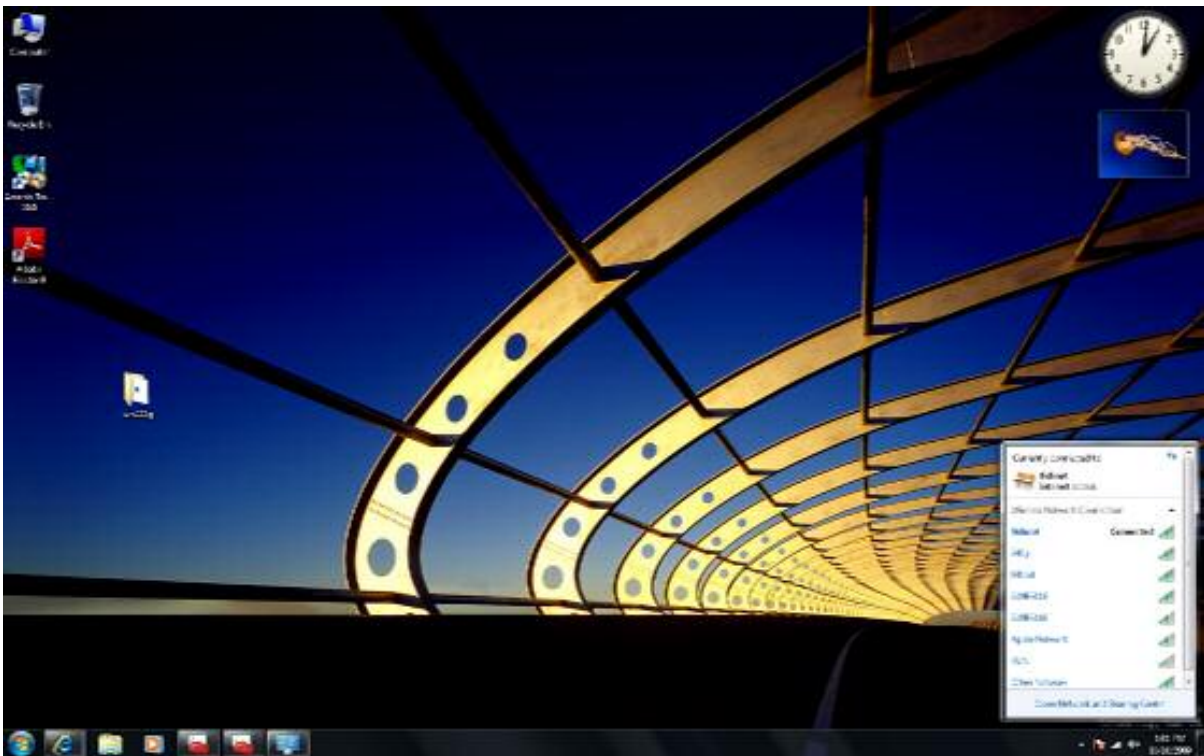
8. Wait about 30 seconds till the installation is completed.



9. Here until, the installation procedures are finished. If the installation is successful, you can see the windows like below:



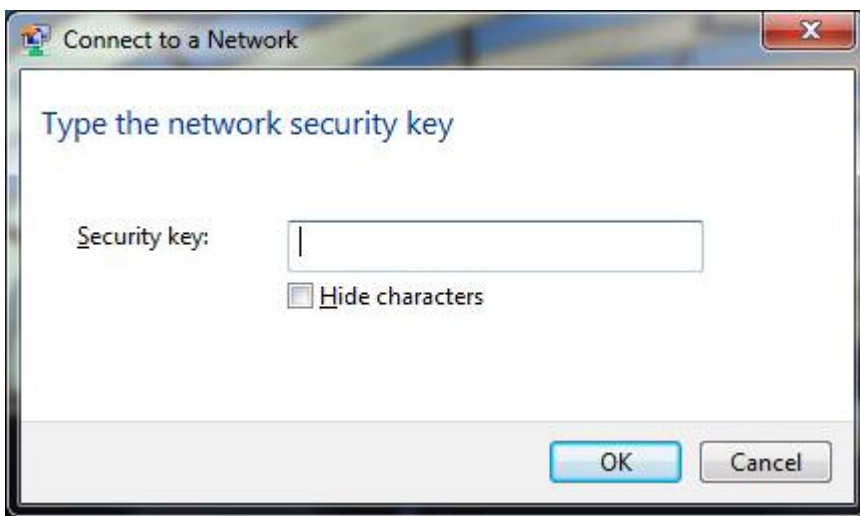
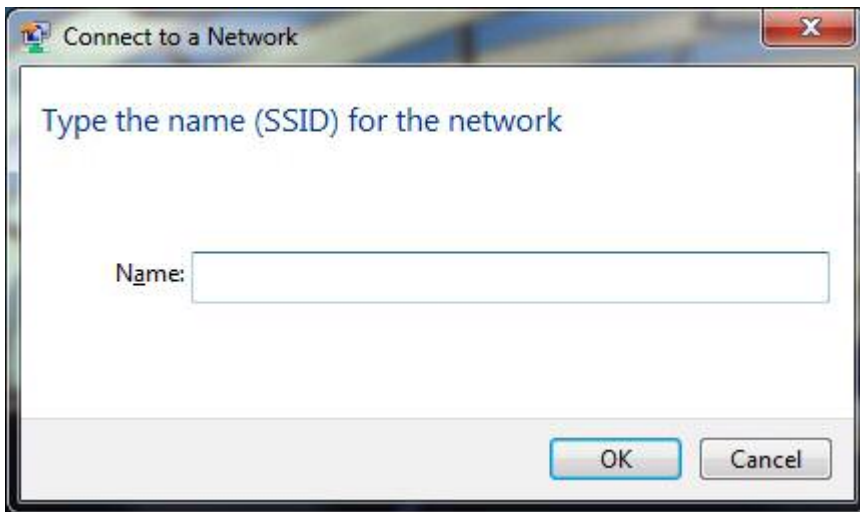
10 This has completed the installation of the wireless adapter driver to your Windows 7. Next is to get it connected to your wireless router. For first time connection, you will see the wireless icon at the tool bar:



11 You will be able to see many wireless hotspots around your working area. Choose the wireless signal that belongs to your router. In this example, we have chosen the “**Other Network**” and click “**Connect**”. Also check “**Connect automatically**”.



12 Next, Windows 7 will prompt you for the wireless SSID and also the security code. Enter this information as you have setup in your router. Once done, your Windows7 will have the TP-Link wireless adapter connected to your router.



13 After you have entered these information, your Windows 7 wireless connection will locate your router and get the connection established. The above setup is only needed for the first time installation. Next time, when you turn on your computer, the Windows 7 will connect to your router automatically.

If you need any help, please contact us at Asia Radio 2000 Pte Ltd at 62875335 ext 117.

Thank you.